

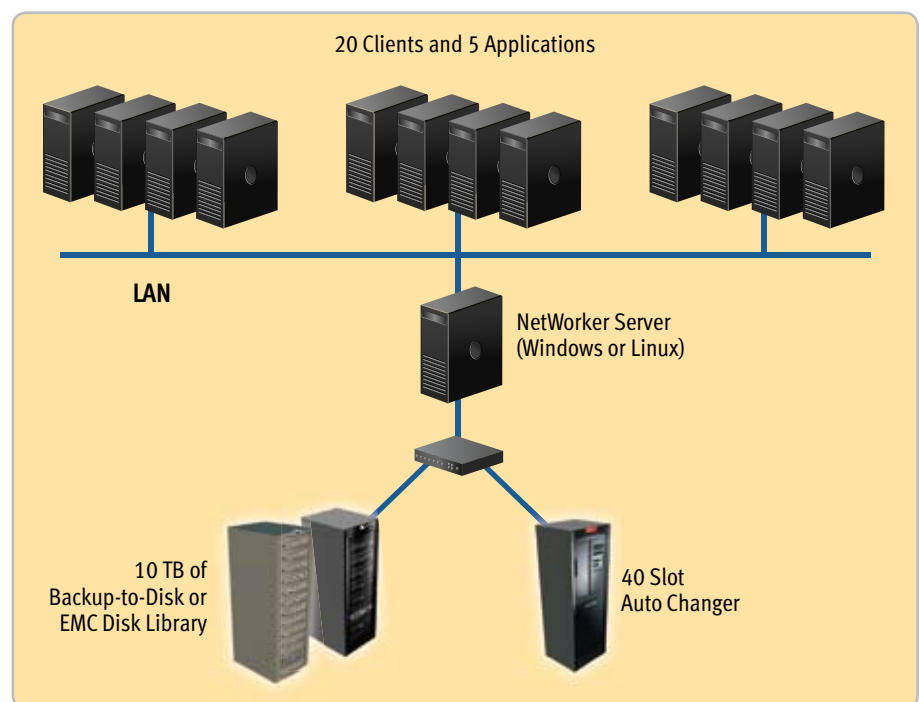
EMC NetWorker Fast Start

An integrated, packaged solution for the midsize organization that's next-generation ready

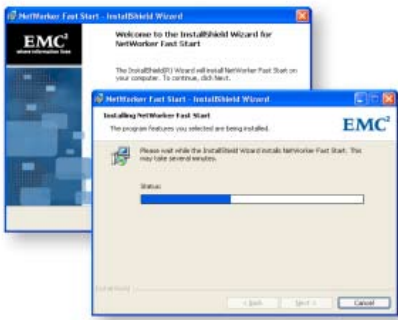
EMC® NetWorker® is an enterprise-class backup application that provides complete backup and recovery, combining traditional and next-generation backup in one central solution. With NetWorker Fast Start, these benefits are easy for the midsize organization to obtain.

NetWorker Fast Start is a new offering that delivers an integrated, packaged solution that simplifies licensing, installation, and configuration—all at an affordable price. It provides:

- One model number for easy ordering, making it easy for customers to order it quickly
- One low price that's over 30 percent less than leading competitive solutions
- One-day installation via installation wizards requiring 80 percent fewer clicks and screens than comparable solutions
- One solution—Fast Start is the full-version NetWorker so customers can add any of NetWorker next-generation capabilities and ensure long-term investment protection



NetWorker Fast Start includes the following license coverage



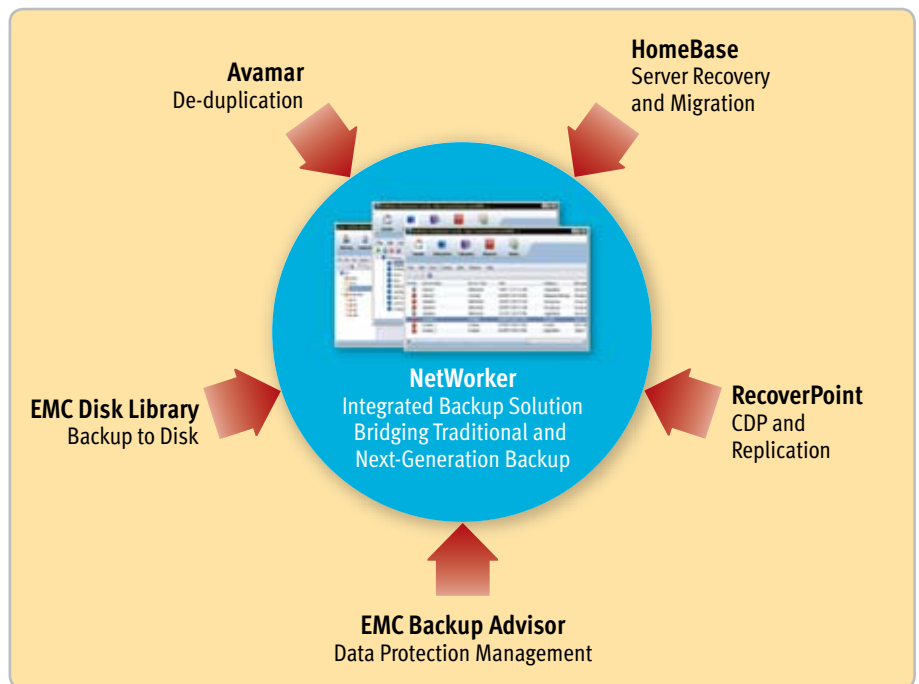
New configuration and installation wizards

The Fast Start install wizards reduce by up to 80 percent the amount of clicks and screens required making installation easy by:

- **Automatically** installing all NetWorker server components with minimal user interaction.
- **Automatically** installing all NetWorker clients and application modules by detecting the application and installing the corresponding module
- **Automatically** creating NetWorker clients, groups, and schedules required for operations.
- **Automatically** identifying disk device for backup.
- **Automatically** using the NetWorker Management Console Library Wizard to configure EMC Disk Library and auto-changers.

Full-version NetWorker and next-generation readiness

Once installed, you get full-version NetWorker, enjoying the same performance and access to NetWorker's next-generation capabilities—like global data de-duplication, VMware® VCB and de-duplication backups, replication management, CDP, backup analytics, and Disk Library media management—that NetWorker customers depend on today. This provides you with clear investment protection as your environment grows, knowing that EMC NetWorker will be able meet your requirements for complete, high-performance backup and recovery—making it the perfect solution for customers who want enterprise-class capabilities at an affordable price point and cost of ownership.



EMC Corporation
 Hopkinton
 Massachusetts
 01748-9103
 1-508-435-1000
 In North America 1-866-464-7381
www.EMC.com

Take the next step

To learn how EMC NetWorker Fast Start can make your backup and recovery process more efficient and cost-effective, contact your local EMC sales representative or authorized value-added reseller, or visit our website at www.EMC.com.